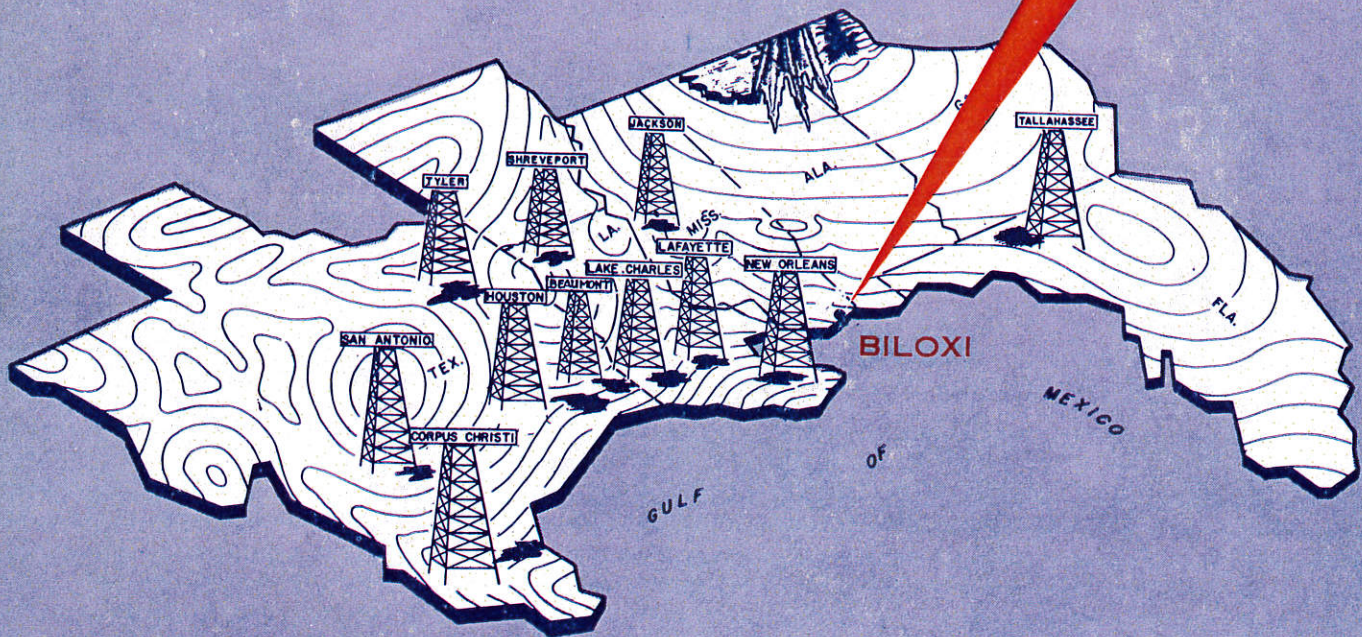


Neil M. Sullivan

Transactions

VOLUME X
GULF COAST ASSOCIATION
OF GEOLOGICAL SOCIETIES



BILOXI, MISSISSIPPI

OCTOBER 19, 20, 21, 1960

TRANSACTIONS
Gulf Coast Association of Geological Societies

VOLUME X, 1960

Wendell B. Johnson, Editor

prepared for the
TENTH ANNUAL CONVENTION OF G.C.A.G.S.
and the
**1960 FALL REGIONAL MEETING OF THE
AMERICAN ASSOCIATION OF PETROLEUM GEOLOGISTS**

held in co-operation with
**The Gulf Coast Section of the
Society of Economic Paleontologists and Mineralogists**

OCTOBER NINETEENTH THROUGH TWENTY-FIRST, 1960

at

THE BUENA VISTA HOTEL, BILOXI, MISSISSIPPI

To purchase copies
see page 15

Published at
Jackson, Mississippi

Copyright 1960 by the Gulf Coast Association of Geological Societies.
No reproduction without permission of the President of the G.C.A.G.S.

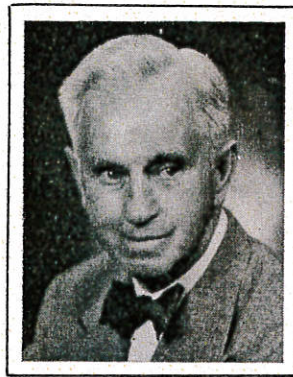
THE GULF COAST ASSOCIATION OF GEOLOGICAL SOCIETIES
TAKES PLEASURE IN HONORING THE FOLLOWING
GEOLOGISTS FOR THEIR CONTRIBUTIONS TO GEOLOGY



Paul Livingston Applin
* (Page 304)



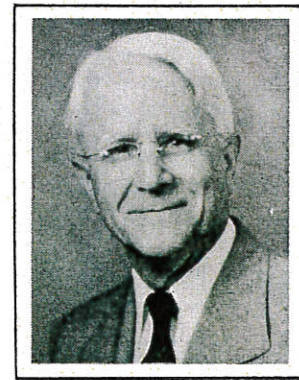
Mrs. Esther Richards Applin
(Page 305)



William Clifford Morse
(Page 306)



Herman Gunter
(Page 308)



Bernerd William Blanpied
(Page 310)

*Page references given in parentheses for biographical sketch and list of publications.

	Page
STRATIGRAPHY AND STRUCTURE OF LAKE ARTHUR FIELD, JEFFERSON DAVIS PARISH, LOUISIANA (title only) by Clyde A. Pine	242
FLORIDA COASTAL CLASSIFICATION by William F. Tanner	259
INTERPRETATION OF DIPMETER SURVEYS IN MISSISSIPPI by J. A. Gilreath	267
LOWER CRETACEOUS TREND OF SOUTH ARKANSAS, NORTH LOUISIANA, MISSISSIPPI AND ALABAMA (abstract and illustrations) by T. H. Philpott	276
RALEIGH FIELD, SMITH COUNTY, MISSISSIPPI, A LOWER CRETACEOUS OIL FIELD (abstract and illustrations) by F. X. Bland and W. E. Gardner	278
A CORRELATION OF THE GULF COAST JACKSON by Charles W. Stuckey, Jr.	285
PROPER WELL SPACING—THE OIL INDUSTRY'S GREATEST NEED by E. B. Miller, Jr.	299
PRESIDENTIAL AWARDS FOR THREE BEST PAPERS — 1959 CONVENTION, HOUSTON, TEXAS	303
PAUL LIVINGSTON APPLIN	304
MRS. ESTHER RICHARDS APPLIN	305
WILLIAM CLIFFORD MORSE	306
HERMAN GUNTER	308
BERNERD WILLIAM BLANPIED	310
REPORT OF THE PRESIDENT, GULF COAST SECTION, S. E. P. M. by David Pope	312
REPORT OF THE EDITOR, GULF COAST ASSOCIATION OF GEOLOGICAL SOCIETIES by Wendell B. Johnson	313
INDEX TO PREVIOUS TRANSACTIONS, VOLUMES I THROUGH IX	315

TABLE OF CONTENTS

	Page
HONOREES, VOLUME X	iii
INDEX TO ADVERTISERS	vii
INDEX TO GEOLOGICAL SOCIETY DIRECTORIES	viii
OFFICERS AND REPRESENTATIVES OF GULF COAST ASSOCIATION OF GEOLOGICAL SOCIETIES	ix
COMMITTEES FOR TENTH ANNUAL CONVENTION OF GULF COAST ASSOCIATION OF GEOLOGICAL SOCIETIES	x
OFFICERS AND SELECTED COMMITTEES, GULF COAST SECTION, SOCIETY OF ECONOMIC PALEONTOLOGISTS AND MINERALOGISTS	xi
OFFICERS OF MEMBER SOCIETIES OF GULF COAST ASSOCIATION OF GEOLOGICAL SOCIETIES	xi
PAST PRESIDENTS OF GULF COAST ASSOCIATION OF GEOLOGICAL SOCIETIES	xii
REPORT OF THE PRESIDENT, GULF COAST ASSOCIATION OF GEOLOGICAL SOCIETIES by M. F. Kirby	xiii

TECHNICAL PAPERS AND ABSTRACTS

A COMPARISON OF THE MISSISSIPPI SUBMARINE TRENCH AND THE IBERIAN TROUGH by Hubert C. Skinner	1
DIAGNOSTIC FAUNAL CHARACTERISTICS ON AND NEAR A BARRIER ISLAND, HORN ISLAND, MISSISSIPPI by William R. Walton	7
DISCOVERY AND DEVELOPMENT OF THE PERSON FIELD, KARNES COUNTY, TEXAS by M. A. Reagan, Jr. and R. T. Foust, Jr.	25
MIOCENE - OLIGOCENE BOUNDARY PROBLEMS IN THE GULF COAST (abstract) by E. Ann Butler	32
STRATIGRAPHY AND ITS ROLE IN THE FUTURE EXPLORATION FOR OIL AND GAS IN THE GULF COAST by E. H. Rainwater	33
STRUCTURE AND STRATIGRAPHY OF RAYNE FIELD by Jack W. Shirley	77
FLORIDA—BAHAMA PLATFORM (abstract) by Harold Owens	86
GEOLOGY AS AN HISTORICAL TOOL by Warren E. Grabau	87
LAC BLANC FIELD, VERMILION PARISH, LOUISIANA by Paul E. Boriskie	93
RECENT OSTRACODA FROM THE WEST COAST OF FLORIDA by Harbans S. Puri	107
A THEORY FOR FORMATION OF LIMESTONE CAP ROCK OF SALT DOMES by Richard R. McLeod	151
FAULTING ASSOCIATED WITH DEEP-SEATED SALT DOMES IN THE NORTHEAST PORTION OF THE MISSIS- SIPPI SALT BASIN by Dudley J. Hughes	154
PALYNOLOGY AND ITS APPLICATION IN PETROLEUM EXPLORATION by C. C. M. Gutjahr	175
THE TURTLE BAYOU-KENT BAYOU-NORTH TURTLE BAYOU COMPLEX by Hershel C. Ferguson, Jr.	188
A PRELIMINARY INVESTIGATION OF THE UPPER ORDOVICIAN BRYOZOA OF NORTHWESTERN ALABAMA by Gene B. Martin	201
LITTLE CREEK FIELD, LINCOLN AND PIKE COUNTIES, MISSISSIPPI by P. Eisenstatt	206
THE LOUANN SALT AND ITS RELATIONSHIP TO GULF COAST SALT DOMES by Donald I. Andrews	215
A RESUME OF JURASSIC EXPLORATION IN NORTHEAST TEXAS (abstract) by R. W. Eaton	241

INDEX TO ADVERTISERS

	Page		Page
Alexander & Norman	A 54	E. Leitz, Inc.	A 53
Atwater, Cowan and Associates	A 61	Lester & Witcher Abstract Co., Inc.	A 75
Baroid Division National Lead Company	A101	Lilly and Mayer	A 85
Fred W. Bates & Associates	A 61	The Louisiana Land and Exploration Co.	A 75
Bible Geophysical Co., Inc.	A 3	Lyons and Logan	A101
D. A. Biglane	A 3	M. H. Marr	A 62
Blakey's Log Service	Inside front cover	Maxwell Oil Company	A 20
Leslie Bowling	A 54	W. B. McCarter & C. E. McCarter	A 54
Briggs, Clement & Russ	A 45	Virgil W. Michael	A 90
Marion Buchanan	A 19	Miller Transporters, Ltd.	A 90
Lyle Cashion Company	A 20	Minard & Minard	A 62
Chartor Oil Company	A 3	Mississippi Subsurface Map Co.	A 45
Jack Colle	A 45	William D. Mounger	A 13
William E. Colson	A 54	Natural Gas Measurement Co., Inc.	A 90
Mack Cox	A 90	National Geophysical Company	A 20
J. M. Crosbie and Associates	A 54	Neely Blue Print & Supply Co.	A 61
Delta Drilling Company	A 62	Nixon Blue Print Company	A 85
Dixie Geological Service	A 61	Petroleum Management, Inc.	A 45
Electro-Technical Labs	A 74	Precision Exploration Co.	A 54
Empire Geophysical, Inc.	A 94	Paul A. Radzewicz	A 13
Engineering Service	A 12	Donald M. Reese	A 13
E. L. Erickson	A 45	Rig-Time, Inc.	Back cover
Exploration Surveys, Inc.	Inside back cover	Rodgers, Seglund & Shaw Associates	A 75
F. & A. Map Co., Inc.	A 4	Rowley Drilling Company	A101
Xavier M. Frascogna	A 61	Schlumberger Well Surveying Corp.	A 76
James B. Furrh, Jr.	A 13	Seismograph Service Corporation	A 14
The Geophysical Directory	A 19	F. H. Shortridge	A 3
Geophysical Exploration Company	A 84	Smith & Goodwyn	A 54
Geophysical Service, Inc.	A 19	Southwest Gas Producing Company, Inc.	A 20
John D. Gholson, Trust	A 13	Southern Mud Logging Service, Inc.	A 12
Thomas J. Glennon	A 45	Sperry-Sun Well Surveying Co.	A 85
R. Merrill Harris	A 45	Henry N. Toler	A 61
Humble Oil & Refining Company	A 94	J. C. Trahan, Drilling Contractor, Inc.	A 62
Hutchinson Bag Corporation	A101	Triad Oil and Gas Company	A 61
HycO Oil Company	A 90	Trowbridge Sample Service	A 75
Rodney Jeffreys	A 90	United Geophysical Corporation	A 93
R. L. "Bob" Knellinger	A 19	Vaughey & Vaughey	A 45
Wilbur H. Knight	A 13	Webster & Sims	A 13
Lane-Wells Company	A102	Western Geophysical Company	A 86
Larco Drilling Company	A 85	Whitney National Bank of New Orleans	A 46
D. C. Latimer	A 90	Williams Drilling Company	A 54
Edward B. Launius	A 3	Robert Womack, Jr.	A 3
		Marshall R. Young Drilling Company	A 13

INDEX TO GEOLOGICAL SOCIETY DIRECTORIES

	Page
BEAUMONT GEOLOGICAL SOCIETY	A 1
CORPUS CHRISTI GEOLOGICAL SOCIETY	A 5
EAST TEXAS GEOLOGICAL SOCIETY	A 15
HOUSTON GEOLOGICAL SOCIETY	A 21
LAFAYETTE GEOLOGICAL SOCIETY	A 47
MISSISSIPPI GEOLOGICAL SOCIETY	A 55
NEW ORLEANS GEOLOGICAL SOCIETY	A 63
SHREVEPORT GEOLOGICAL SOCIETY	A 77
SOUTHEASTERN GEOLOGICAL SOCIETY	A 87
SOUTH LOUISIANA GEOLOGICAL SOCIETY	A 91
SOUTH TEXAS GEOLOGICAL SOCIETY	A 95
GULF COAST SECTION, SOCIETY OF ECONOMIC PALEONTOLOGISTS AND MINERALOGISTS	A103

GULF COAST ASSOCIATION OF GEOLOGICAL SOCIETIES

1960

PRESIDENT.....M. F. Kirby, Mississippi Geological Society
PAST PRESIDENT.....George H. Hardin, Jr., Houston Geological Society
VICE-PRESIDENT.....Dodd N. Osburne, New Orleans Geological Society
SECRETARY.....W. W. Woolfolk, South Texas Geological Society
TREASURER.....E. G. Jeffreys, Mississippi Geological Society

EXECUTIVE COMMITTEE

H. C. Weston W. W. Rangeler	Representative Alternate	Beaumont Geological Society Beaumont Geological Society
T. J. Wintermute R. B. Johnson	Representative Alternate	Corpus Christi Geological Society Corpus Christi Geological Society
Henry Goodrich E. J. McFadden	Representative Alternate	East Texas Geological Society East Texas Geological Society
W. L. Lewis A. S. Dickinson	Representative Alternate	Houston Geological Society Houston Geological Society
F. W. Harrison R. C. Mason	Representative Alternate	Lafayette Geological Society Lafayette Geological Society
M. F. Kirby R. V. Ewing E. G. Jeffreys	Representative Alternate Treasurer, G.C.A.G.S.	Mississippi Geological Society Mississippi Geological Society Mississippi Geological Society
Dodd N. Osburne E. P. Roth	Representative Alternate	New Orleans Geological Society New Orleans Geological Society
W. E. Bancroft F. C. Crawford	Representative Alternate	Shreveport Geological Society Shreveport Geological Society
Nevin D. Hoy Robert O. Vernon	Representative Alternate	Southeastern Geological Society Southeastern Geological Society
W. A. Haskell J. M. Barkes	Representative Alternate	South Louisiana Geological Society South Louisiana Geological Society
W. W. Woolfolk Duward W. Dassow	Representative Alternate	South Texas Geological Society South Texas Geological Society

EDITOR

WENDELL B. JOHNSON.....Mississippi Geological Society

ASSOCIATE EDITORS

EMMETT R. ADAMS.....Gulf Coast Section, S.E.P.M.
Mississippi Geological Society
LESTER A. COON.....East Texas Geological Society
H. R. GOULD.....Houston Geological Society
JAY B. WHARTON, JR.....Lafayette Geological Society
W. H. GRIMES.....New Orleans Geological Society
MICHAEL L. KIDDA.....Shreveport Geological Society
HARBANS S. PURI.....Southeastern Geological Society
EVERETTE J. TRAVIS.....South Texas Geological Society

ADVERTISING MANAGER

LESTER J. RINGENBERG.....Mississippi Geological Society

CONVENTION COMMITTEES

GENERAL COMMITTEE

A. E. BLANTON, Chairman.....Sun Oil Company
FRANK X. BLAND.....The California Company
MRS. A. E. BLANTON.....Women's Geological Auxiliary
GLENN E. CLARK.....Rig Time, Incorporated
DAVID C. DAVIS.....Continental Oil Company
GENE O. DAVIS.....Sinclair Oil and Refining Company
R. V. EWING.....Dixie Geological Service
RICHARD W. FARLEE.....Shell Oil Company
DON T. FRANKLIN.....Ashmun and Hilliard
CHARLES G. GIFFIN.....Schlumberger Well Surveying Corporation
E. G. JEFFREYS.....Consulting Geologist
WENDELL B. JOHNSON.....Millsaps College
M. F. KIRBY.....Consulting Geologist
LESTER J. RINGENBERG.....Lion Oil Company
DAVE ROBBINS.....Ohio Oil Company
ROBERT T. VIOLETTE.....Pan American Petroleum Corporation

PROGRAM

GENE O. DAVIS, Co-Chairman.....Sinclair Oil and Refining Company
RICHARD FARLEE, Co-Chairman.....Shell Oil Company
LELAND CULLIGAN.....The California Company
R. V. EWING.....Dixie Geological Service
DUDLEY HUGHES.....Triad Oil Company
GRAHAM HUGHES.....Sinclair Oil and Refining Company

EDITOR

WENDELL B. JOHNSON.....Millsaps College

ADVERTISING

LESTER J. RINGENBERG, Chairman.....Lion Oil Company
MARVIN OXLEY.....Lone Star Oil Company

ENTERTAINMENT

GLENN CLARK, Chairman.....Rig Time, Incorporated
HAROLD BAKER.....Consulting Geologist
WALTER TROEGEL.....Willis Hughes
SAM RAY.....Larco Drilling Company

EXHIBITS

DAVID C. DAVIS, Chairman.....Continental Oil Company

FIELD TRIP

FRANK X. BLAND, Chairman.....The California Company
ALAN JACKSON.....Humble Oil and Refining Company,
Hattiesburg, Mississippi
ROBERT JACOBS.....Union Producing Company
J. L. NICHOLS.....Gulf Oil Corporation
BAXTER L. SMITH.....Sun Oil Company

HOUSING

DON FRANKLIN, Chairman.....Ashmun and Hilliard
LOUIS RIDGWAY.....Ridgway Management, Incorporated

PUBLICITY

ROBERT T. VIOLETTE, Chairman.....Pan American Petroleum Corporation
JOSEPH LINDSEY.....Pan American Petroleum Corporation

REGISTRATION

CHARLES G. GIFFIN, Chairman.....Schlumberger Well Surveying Corporation

SOUND AND PROJECTION

DAVE ROBBINS, Chairman.....Ohio Oil Company
RICHARD BURNETT.....Tennessee Gas Transmission Company

WOMEN'S ACTIVITIES

MRS. A. E. BLANTON, Chairman.....Women's Geological Auxiliary
MRS. CHARLES G. GIFFIN.....Registration
MRS. E. G. JEFFREYS.....Fashion Show and Luncheon
MRS. M. F. KIRBY.....Brunch
MRS. GEORGE WHITE.....Favors
MRS. ROBERT ROSS.....Boat Trip

**COUNCIL OF GULF COAST SECTION
SOCIETY OF ECONOMIC PALEONTOLOGISTS AND MINERALOGISTS**

PRESIDENT.....David E. Pope, Union Producing Company, Kenner, Louisiana
 PAST PRESIDENT.....Marcus A. Hanna, Consultant, Houston, Texas
 VICE-PRESIDENT.....A. D. Ellis, Jr., Pan American Petroleum Corporation, Houston, Texas
 SECRETARY.....Gordon C. Munsey, Atlantic Refining Company, Lafayette, Louisiana
 TREASURER.....H. A. Chun, Texas Gulf Producing Company, Houston, Texas

**PARTIAL LIST OF COMMITTEE CHAIRMEN AND APPOINTMENTS
GULF COAST SECTION — S.E.P.M.**

PROGRAM.....A. D. Ellis, Jr., Pan American Petroleum Corp., Houston, Texas
 MEMBERSHIP.....H. A. Chun, Texas Gulf Producing Company, Houston, Texas
 TYPE LOCALITY.....Charles W. Stuckey, Jr., Union Oil Company of California, Houston, Texas
 EDITOR, TYPE LOCALITY.....Harold V. Andersen, Louisiana State University,
 Baton Rouge, Louisiana
 PUBLICITY.....John B. Dunlap, Jr., Humble Oil and Refining Company,
 New Orleans, Louisiana
 REPRESENTATIVE TO INTERNATIONAL PALEONTOLOGICAL UNION.....Jules Braunstein

**OFFICERS OF MEMBER SOCIETIES OF
GULF COAST ASSOCIATION OF GEOLOGICAL SOCIETIES**

BEAUMONT GEOLOGICAL SOCIETY

PRESIDENT.....W. W. Rangeler, Sun Oil Company, Beaumont, Texas
 VICE-PRESIDENT.....Forrest Moore, Sun Oil Company
 SECRETARY.....A. M. Borland, Sun Oil Company
 TREASURER.....J. R. Keeton, Pan Geo Atlas Corporation

CORPUS CHRISTI GEOLOGICAL SOCIETY

PRESIDENT.....C. M. Baker, Continental Oil Company
 1st VICE-PRESIDENT.....Dale R. Olson, Pure Oil Company
 2nd VICE-PRESIDENT.....J. V. McCullough, Carrl Oil Company
 SECRETARY.....Kenneth E. Nelson, Texaco, Incorporated
 TREASURER.....Fred M. Thompson, Jr., Houston Natural Gas Producing Company

EAST TEXAS GEOLOGICAL SOCIETY, Tyler

PRESIDENT.....Paul H. Nichols, Shell Oil Company
 VICE-PRESIDENT.....James C. Dowdy, Texaco, Incorporated
 SECRETARY.....Jack C. Goodwin, Texaco, Incorporated
 TREASURER.....Richard G. McKellar, British-American Oil Producing Company

HOUSTON GEOLOGICAL SOCIETY

PRESIDENT.....William A. Gorman, Royal Oil and Gas Corporation
 1st VICE-PRESIDENT.....Philip R. Allin, Union Texas Natural Gas Corporation
 2nd VICE-PRESIDENT.....Austin D. Brixey, Jr., Sinclair Oil and Gas Company
 SECRETARY.....Clark Edgecomb, Jr., Schlumberger Well Surveying Corporation
 TREASURER.....Thomas M. Burke, John W. Mecom

LAFAYETTE GEOLOGICAL SOCIETY

PRESIDENT..... S. A. Spencer, Phillips Petroleum Company
 VICE-PRESIDENT..... Adam Perez, Schlumberger Well Surveying Corporation
 SECRETARY..... William S. McAlister, Texas Eastern Transmission Corporation
 TREASURER..... Julian Morgan, Tidewater Oil Company

MISSISSIPPI GEOLOGICAL SOCIETY, **Jackson**

PRESIDENT..... Rudy Ewing, Dixie Geological Service
 VICE-PRESIDENT..... Emmett R. Adams, Shell Oil Company
 SECRETARY..... Allen Jackson, Humble Oil and Refining Company
 TREASURER..... Daniel E. Herlihy, Mobil Oil Company

NEW ORLEANS GEOLOGICAL SOCIETY

PRESIDENT..... Jules Braunstein, Shell Oil Company
 VICE-PRESIDENT..... Leonard L. Limes, Kerr-Magee Oil Industries, Incorporated
 SECRETARY..... David N. Schell, Superior Oil Company
 TREASURER..... Jack D. Cox, John W. Mecom

SHREVEPORT GEOLOGICAL SOCIETY

PRESIDENT..... J. C. Byrd, Jones O'Brien, Incorporated
 1st VICE-PRESIDENT..... Jimmie C. Smith, Phillips Petroleum Company
 2nd VICE-PRESIDENT..... J. K. Rodgers, Arkansas Fuel Oil Corporation
 SECRETARY..... Pat N. Mason, Pan American Petroleum Company
 TREASURER..... George C. Shute, Mobil Oil Company

SOUTHEASTERN GEOLOGICAL SOCIETY, **Tallahassee, Florida**

PRESIDENT..... Nevin D. Hoy, United States Geological Survey
 VICE-PRESIDENT..... J. D. Munroe, Sun Oil Company
 SECRETARY-TREASURER..... H. Grant Goodell, Florida State University

SOUTH LOUISIANA GEOLOGICAL SOCIETY, **Lake Charles**

PRESIDENT..... Troy A. Freund, Bel Oil Corporation
 VICE-PRESIDENT..... Clifton Miller, McNeese State College
 SECRETARY..... James H. Smith, Schlumberger Well Surveying Corporation
 TREASURER..... Grant S. Darnell, Pan American Petroleum Corporation

SOUTH TEXAS GEOLOGICAL SOCIETY, **San Antonio**

PRESIDENT..... John S. Rives, George H. Coates
 VICE-PRESIDENT..... Roy H. Guess, Newman Brothers Drilling Company
 SECRETARY..... Charles E. Kimmell, Gasoline Production Company
 TREASURER..... Wilford Lee Stapp, Phillips Drilling Corporation

PAST PRESIDENTS

1951	Leslie Bowling.....	New Orleans Geological Society
1952	W. M. Chaddick, Jr.....	Corpus Christi Geological Society
1953	R. T. Wade.....	Shreveport Geological Society
1954	W. R. Canada.....	Houston Geological Society
1955	A. E. Blanton.....	Mississippi Geological Society
1956	R. L. Layden.....	South Texas Geological Society
1957	H. N. Hickey.....	New Orleans Geological Society
1958	E. A. Lohse.....	Corpus Christi Geological Society
1959	G. C. Hardin.....	Houston Geological Society

GULF COAST ASSOCIATION OF GEOLOGICAL SOCIETIES

REPORT OF THE PRESIDENT

1960

This year the Gulf Coast Association of Geological Societies is celebrating its tenth anniversary. In this interval the membership of the participating societies, has grown to become the second largest geological organization in the United States. It is surpassed by the American Association of Petroleum Geologists (AAPG).

The Gulf Coast Association (GCAGS) was originated by Earl B. Noble, President of AAPG in 1945-46. He suggested at the annual meeting of AAPG held in Chicago in 1946 that the Mississippi Geological Society organize and act as host for an experimental regional meeting of AAPG. It was Mr. Noble's concern that the AAPG was becoming too large. Membership in AAPG at that time was slightly more than 4,000, the size of GCAGS today.

The first and tenth meetings were held in the Buena Vista Hotel on almost the same dates—October 24 and 25, 1946. On the program were such speakers as: J. B. Storey, the immediate past president of the Mississippi Geological Society during whose term the meeting had its inception; Urban B. Hughes; Frederick F. Mellen, then President of the Mississippi Geological Society; Watson H. Monroe; Clyde W. Alexander; Grover Murray, Jr.; Henry V. Howe; E. D. Pressler; F. Stearns MacNeil; Paul Weaver; C. L. Moody; Fred W. Bates; A. M. Lloyd; A. M. Current; F. R. Shroeder; George P. Zebal and Tom McGlothlin. With such a distinguished group of geologists laying the foundation, it is no surprise that the organization has flourished.

Following this Regional Meeting, similar ones were held in San Antonio, November 5 and 6, 1947; Houston, December 2 and 3, 1948; and Biloxi again on October 12-14, 1949.

In 1950 the meeting was no longer designated a regional meeting of the AAPG, but was for the first time held under the auspices of the GCAGS. The organization was composed of eight geological societies, each an affiliate of AAPG. The original societies were New Orleans, the host society, Corpus Christi, Houston, Tyler, Shreveport, Lake Charles, Lafayette and Jackson. In 1952, Baton Rouge was added, in 1954, San Antonio or the South Texas Geological Society, and Tallahassee or the Southeastern Geological Society, and in 1956, Beaumont joined. The year 1959 marked our first casualty when Baton Rouge dropped out.

Last year for the first time AAPG was asked to designate the GCAGS meeting as its Gulf Coastal Area Regional Meeting. This year the designation has again been made regarding this meeting.

In 1953 the constitution was adopted and officers were elected. Between 1950 and 1953 the organization was governed by the Chairman of the Steering Committee, in each case the representative to GCAGS from the host society.

The organization was founded so that subjects and problems which were common to the Gulf Coast Region, but did not necessarily pertain to the national organization, could receive the publicity they so richly deserved. In this function it has performed exceedingly well.

Through financial support to the Gulf Coast Section of SEPM and with the cooperation of the local member societies, the location or relocation and descriptions of the type locality for each formation within the Gulf Coast is at present being undertaken. This project needs our fullest cooperation.

The financial status of the organization as of the middle of July was as follows:

\$5,627.85 of 2½% United States Government Bonds which mature in 1965
\$5,163.08 on deposit at First Federal Savings and Loan, Jackson, Mississippi bearing 4% interest
\$5,311.01 checking account in First National Bank, Jackson, Mississippi
Inventory at Cambe Log Library located in Houston, Texas is valued at \$27,591.00

It has indeed been an honor and pleasure to have served you this year as your President. May those who follow me in this capacity be as fortunate in receiving the cooperation and assistance which have aided me so greatly during my term of office.

M. F. KIRBY

BACK ISSUES ARE NOW AVAILABLE OF ALL THE
TRANSACTIONS OF THE GCAGS, VOLUMES
1 THRU 10, AND GCAGS FIELD-TRIP
GUIDE BOOKS

1951 Transactions, Volume 1.....	\$3.50
1952 Transactions, Volume 2.....	5.50
1953 Transactions, Volume 3.....	5.50
1954 Transactions, Volume 4.....	3.50
1955 Transactions, Volume 5.....	3.50
1956 Transactions, Volume 6.....	3.50
1957 Transactions, Volume 7.....	5.50
1958 Transactions, Volume 8.....	5.50
1959 Transactions, Volume 9.....	5.50
1960 Transactions, Volume 10.....	5.50

FIELD-TRIP GUIDE BOOKS

1958 Sedimentology of South Texas.....	\$6.50
1959 Recent sediments of the north-central Gulf Coastal Plain.....	4.50
1960 Upper Tertiary and Quaternary Stratigraphy of the Pascagoula Valley, Mississippi, and Recent Coastal Sedimentation of the Mississippi Sound.....	2.00

ORDER FROM: Cambe Log Library
718 Milam Street
Houston 2, Texas

(All prices postpaid. Please make checks payable to Cambe Log Library.)